



## GUIDE TO THE NATIONAL INNOVATION EXCHANGE

---

Global Conference 2019, 18-19 June 2019 in Paris, France  
OECD Conference Centre

### Contents

Introduction .....	2
Set-up of the National Innovation Exchange.....	3
Country space .....	3
Pitch booth.....	3
Location of your country stand .....	3
Planning for the National Innovation Exchange.....	3
When to come .....	3
What to bring.....	4
Logistics.....	5
Printing material .....	5
Storage.....	5
Plugs.....	5
WiFi.....	5
During the National Innovation Exchange.....	5
Next steps .....	5

## Introduction

The 2019 EITI Global Conference is the biggest conference where countries share experiences with EITI implementation.

The **National Innovation Exchange**, previously called **National Expo**, is the place implementing countries present their achievements, exchange best practices and lessons learnt. **It's crucially a place for peer learning and sharing innovations.**

The conference participants, supporters from government, industry, international organisations, the investment community, and, of course, other implementing countries, will visit your country space to learn more about how your country uses the EITI in to address governance challenges, inform public debates and strengthen government systems.

The 2019 Global Conference theme is **Open Data, Build Trust**. At the National Innovation Exchange, you will get a platform to **show how you are using the EITI to:**

- **Moving towards systematic disclosure**

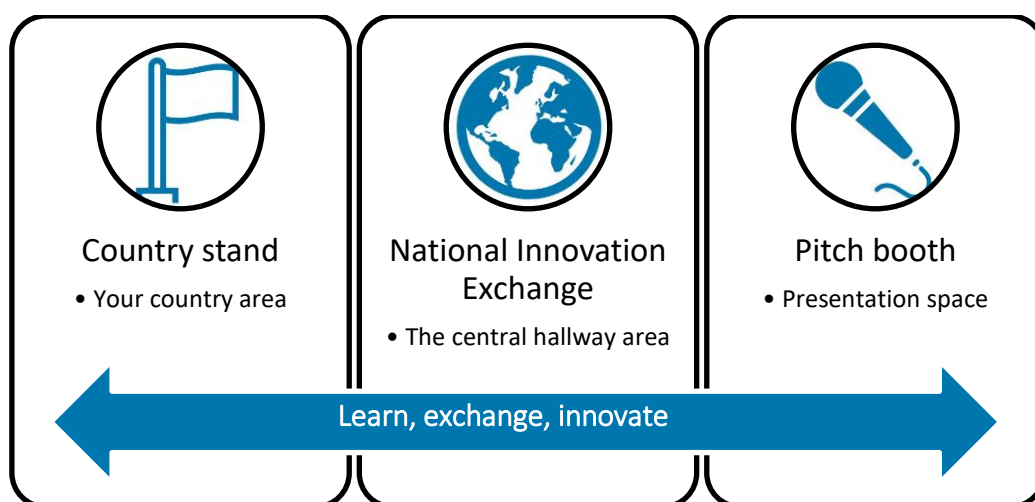
Highlight how your country – government agencies and or companies – are already **routinely publishing information** as required or encouraged by the EITI Requirements. This can be online publication of beneficial ownership, license cadastres, revenue data, payments data from companies, etc.

You can also highlight the work your government is doing to **digitise records**, or how EITI relevant **data is now being collected through core administrative routines instead of relying on EITI reporting**. If you are planning any other work on systematic disclosure / mainstreaming, this is a great place to highlight and ask for feedback from other countries.

- **How natural resource data being used to build trust among different stakeholders, actors or communities in your country**

Countries have used data from the EITI to inform policy decisions, reform, clarify questions from the public. This move **from data to information and knowledge** is at the core of the EITI's work. Any examples of how you communicate the EITI's findings, or how you combine EITI data with other information to respond to a question of public interest can be showcased. For example, how many revenues are flowing back to my community?

*Figure 1: Components of the National Innovation Exchange 2019*



## Set-up of the National Innovation Exchange

The National Innovation Exchange is located in the OECD Conference Centre.

### Country space

As at every conference, countries will have their own space to present their work (more details below). What's different this year is that we don't have walls separating the country spaces (separate booths). Your space will be clearly identified with signage and you will have your infrastructure available – depending on your needs.

The location of your country space will be shared in May. You are likely to be grouped with countries in your region.

The furniture and equipment in the country space include:

- Country name and flag
- 1 high chair
- 1 high table
- 1 brochure stand including 6 “pockets”
- Electrical plugs: 2 per space (one for screen, one extra), voltage information on next page

Optional – please see registration form

- A wall / pin board to hang up infographics, posters – please communicate through the registration form.
- Wall-mounted monitor to hook up your laptop to (to show presentations etc)

Laptops to connect to the plasma screen will not be provided, you will need to bring and use your own laptop and charging cable.

### Pitch booth

Implementing countries, as well as other partners, will be invited to present their work in the form of a short presentation of 10-15 minutes. The presentations will happen alongside the sessions and be added to the conference program.

### Location of your country stand

The central hallway is the National Innovation Exchange. The EITI International Secretariat will advise you on the location of your stand in May and latest on 17 June when registration and set up begins.

## Planning for the National Innovation Exchange

### When to come

The EITI International Secretariat is funding travel and accommodation for one participant per implementing country to staff these stands during the conference in Paris. The country spaces are set-up the day before the Global Conference starts and dismantled on the last day of the Conference.

Monday 17 June 2019

Set up of country stands in the National Innovation Exchange

Tuesday 18 June 2019	Global Conference and National Innovation Exchange, Day 1
Wednesday 19 June 2019	Global Conference and National Innovation Exchange, Day 2. Dismantling in the afternoon.

## What to bring

Things to highlight at your country stand:

- Your work in moving towards systematic disclosures;
- How your country/national secretariat is using natural resource data to build trust among different stakeholders, actors or communities in your country;
- Innovative practices in multi-stakeholder engagement;
- Any other work your MSG wishes to highlight

## Moving towards systematic disclosure through

- **Presentation** using a computer – a monitor and can provide you with a screen for you to show online. One-pagers and infographics illustrating how your government and / or reporting companies have started to publish data on their websites or through quarterly reports.
- **Showcasing online solutions** on your screen
- We encourage all countries **to prepare a presentation for showing mainstreaming projects** or other work and innovations to other EITI countries in the **pitch booth**. You can enter your interest in preparing a 10-15 minute presentation in the registration form.



## Use of data

- **Case studies** of using EITI data to respond to a question, inform a debate, support research, respond to concerns of communities;
- **Infographics, posters, roll-ups** visually communicating EITI data.  
**Note our ongoing competitions!** See [eiti.org/photo-competition-2019](http://eiti.org/photo-competition-2019), [eiti.org/infographic-competition-2019](http://eiti.org/infographic-competition-2019), [eiti.org/impact-competition-2019](http://eiti.org/impact-competition-2019)
- Any examples of how you communicate the EITI's findings, or how you combine EITI data with other information to respond to a question of public interest can be showcased. For example, how many revenues are flowing back to my community?



## Logistics

### Printing material

We recommend that you bring any printed material with you in your luggage. Note that storage and display possibilities are limited. Printing costs are quite substantial. You can explore printing with local printing shops, however, the International Secretariat will not be able to assist you with that.

The Conference Centre is equipped with a Copy Centre that can assist you with last minute, small printing needs that may arise during the Conference. Kindly note that all costs associated with printing material on site will have to be borne by the country delegations. Printing of large documentation and publications are not possible on site.

### Storage

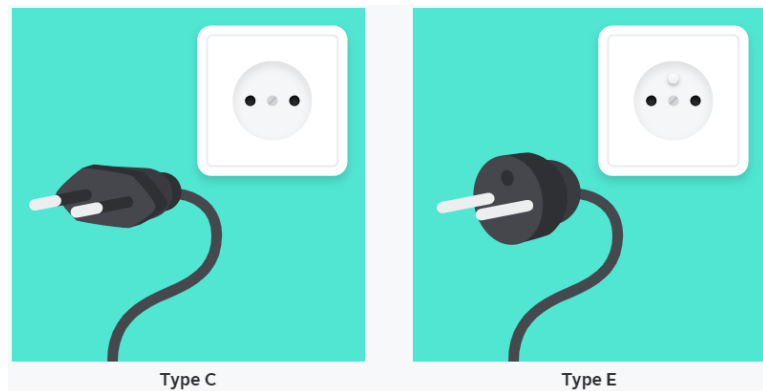
You will be able to store one box (A4 format) in an extra room which we will show you on 17 June, the day we set up the country spaces.

### Plugs

Electrical outlets in France deliver power at 220-240 volts. Most modern, digital items like laptops, cell phones or cameras are designed to be compatible with a vast variety of voltages (from 100 to 240 V usually). [More information.](#)

### WiFi

Free WiFi will be available.



## During the National Innovation Exchange

1. Present your country at your country space, through infographics, presentations using the screen
2. Present your project or an innovation in the pitch booth
3. **Exchange and mingle in the National Innovation Exchange with other countries**

## Next steps

Please fill in the form “EITI National Innovation Exchange registration form” attached to this message to indicate what you are planning to present and what your resource requirements are by **10 May 2019 COB** to [cberger@eiti.org](mailto:cberger@eiti.org).

## Contact person

Christina Berger, [cberger@eiti.org](mailto:cberger@eiti.org), Skype: christina.olivia.berger